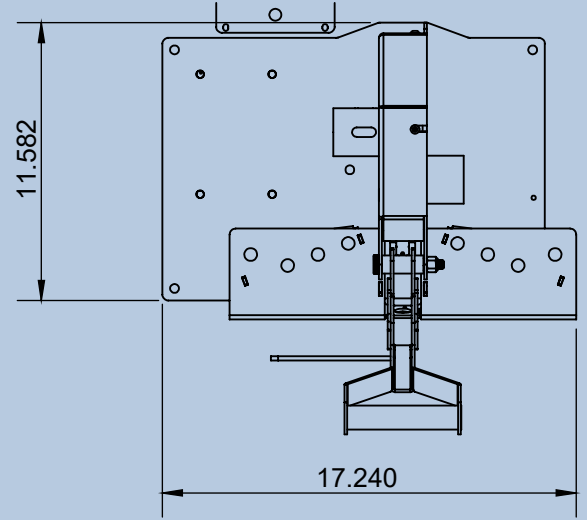
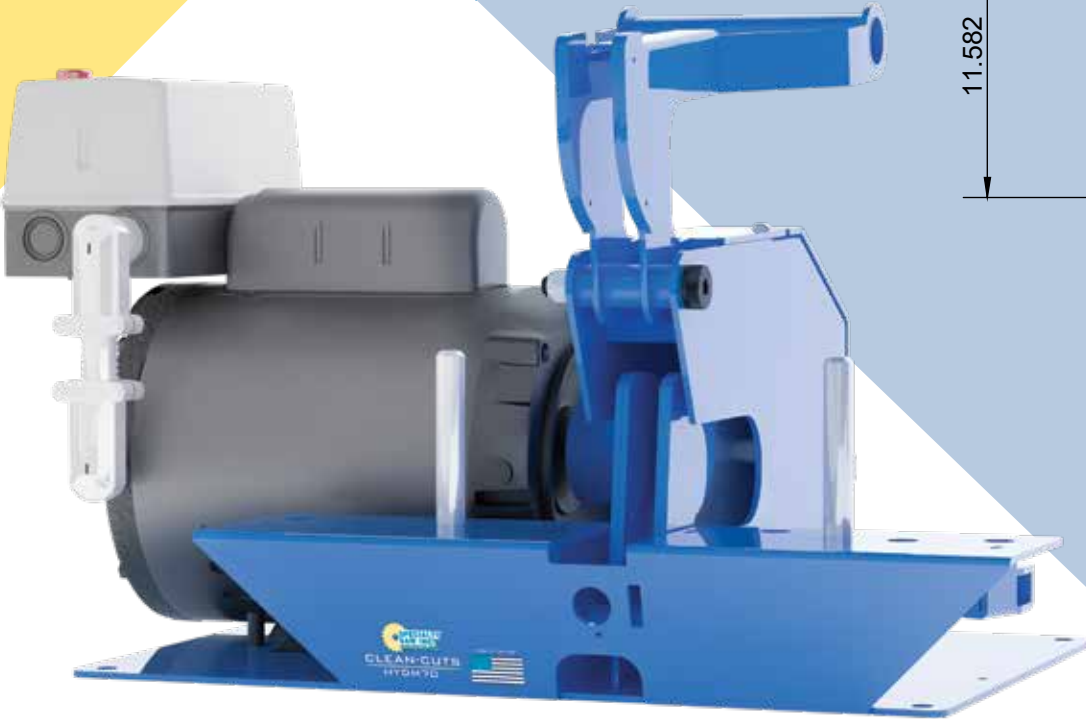


# HYDM70

**CLEAN-CUTS™**

**HYDRAULIC HOSE SAW**

1-1/4" ID x 4 Wire Hydraulic Hose



MODEL	MOTOR	PLUG
HYDM70 110V	1-1/2 HP, 110 VAC (1 Phase), 60 Cycle, 17** Amp, 3,430 RPM	L5-20P
HYDM70 220V-60	2 HP, 220 VAC (1 Phase), 60 Cycle, 11* Amp, 3,430 RPM	L6-30P



**INCLUDES (1) BLADE**  
7" OD x .093 THK X 3/4" arbor

SLOTTED  
EDGE



NOTCHED  
SCALLOPED



ADVANCED  
SCALLOPED



SMOOTH  
EDGE



MICRO  
SLOTTED



**CLEAN-CUTS™**

ADVANCED HOSE  
CUTTING SOLUTIONS

**ORDER NOW: 800-225-0772**

[INFO@SPECIALTYSAW.COM](mailto:INFO@SPECIALTYSAW.COM)



**SPECIALTY  
SAW INC.**

[www.SpecialtySaw.com](http://www.SpecialtySaw.com)

30 WOLCOTT ROAD  
SIMSBURY CT, 06070

ISO 9001:2015 CERTIFIED

V041124

